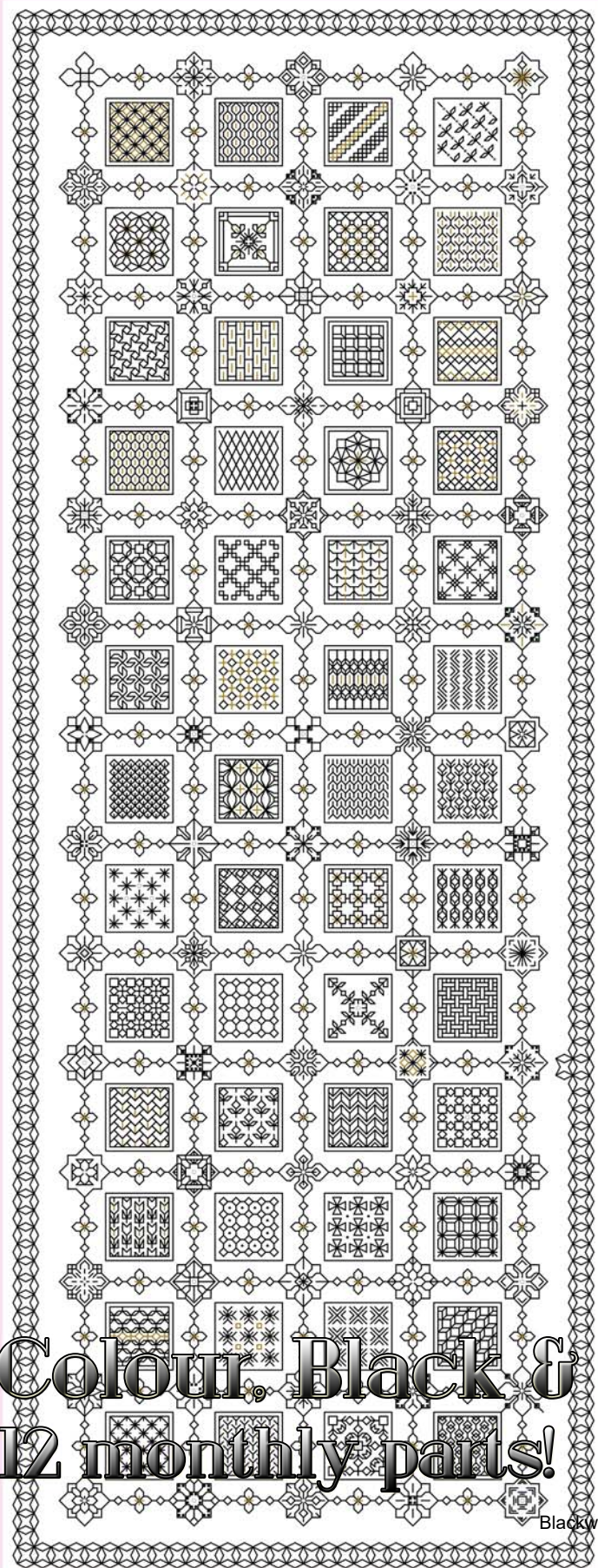
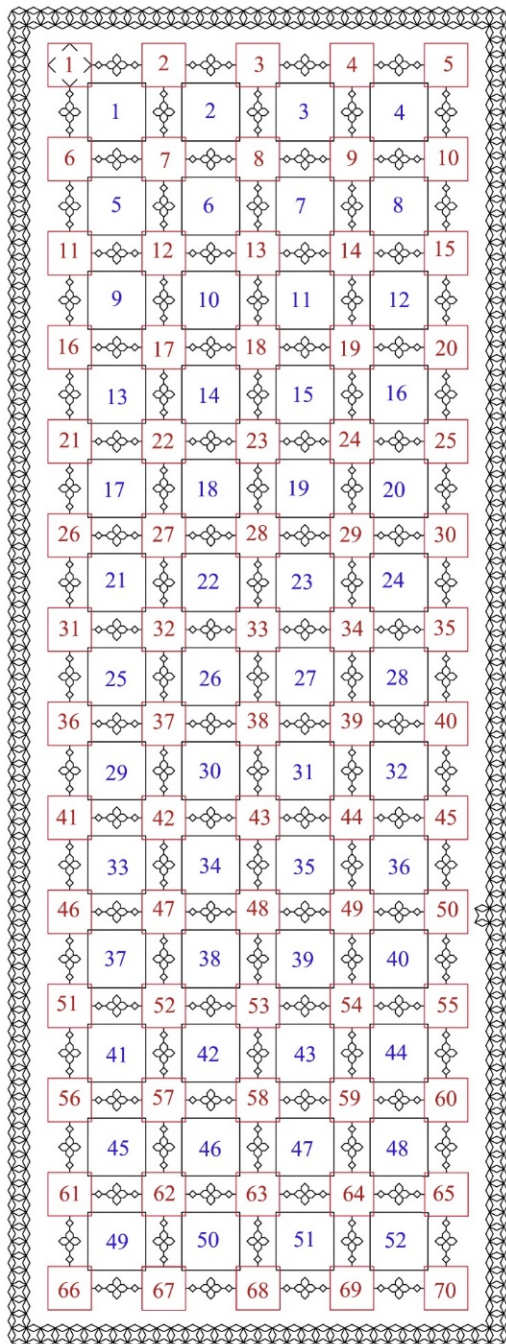


'TINY TREASURES'

Rectangle - Part 6



Colour, Black & Gold
12 monthly parts!



Tiny Treasures Rectangle Design Part 6 – Colour and Black and Gold

Rectangular design suitable for framing or a runner. This design is less complicated than the square design.

Design area: 9.86 x 26.43 inches

Stitches: 138 x 370

Material:

Zweigart 28 count evenweave or 14 count Aida,

15 x 33 inches

25 count Lugana Material size: 17 x 35 inches

70 Flower motifs

52 Pattern blocks

1 border and 120 mini links

Total: 243 Tiny Treasures

Threads: Information about the threads required in on the Keys attached to the back of Part 1 and also in FR0159 Introduction.

Stitches used:

Back stitch, one strand of floss

Cross stitch two strands of floss

Evenweave: stitches are worked over 2 threads unless the pattern indicates otherwise.

Cross stitch: stitches are worked over one block unless the pattern indicates otherwise.

Work Rectangular Design as follows:

Complete any unfinished blocks from previous blocks

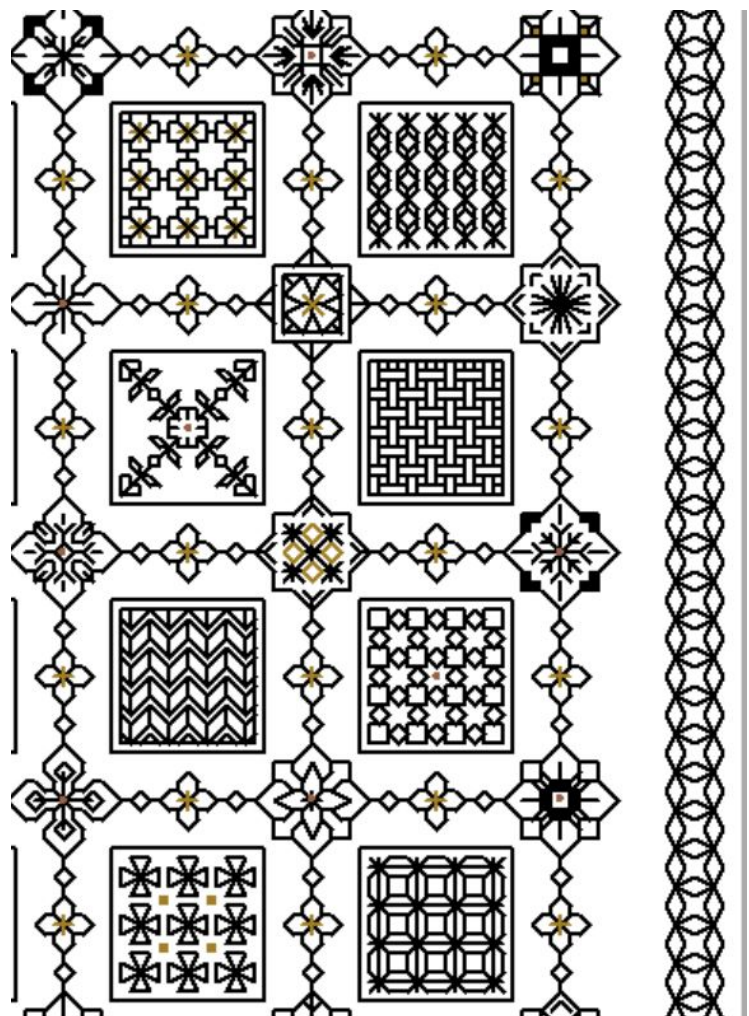
Continue the border using one strand of floss.

Add beads after the whole embroidery has been completed.

I hope you enjoy Part 6. If you have any queries please contact:

lizalmond@blackworkjourney.co.uk

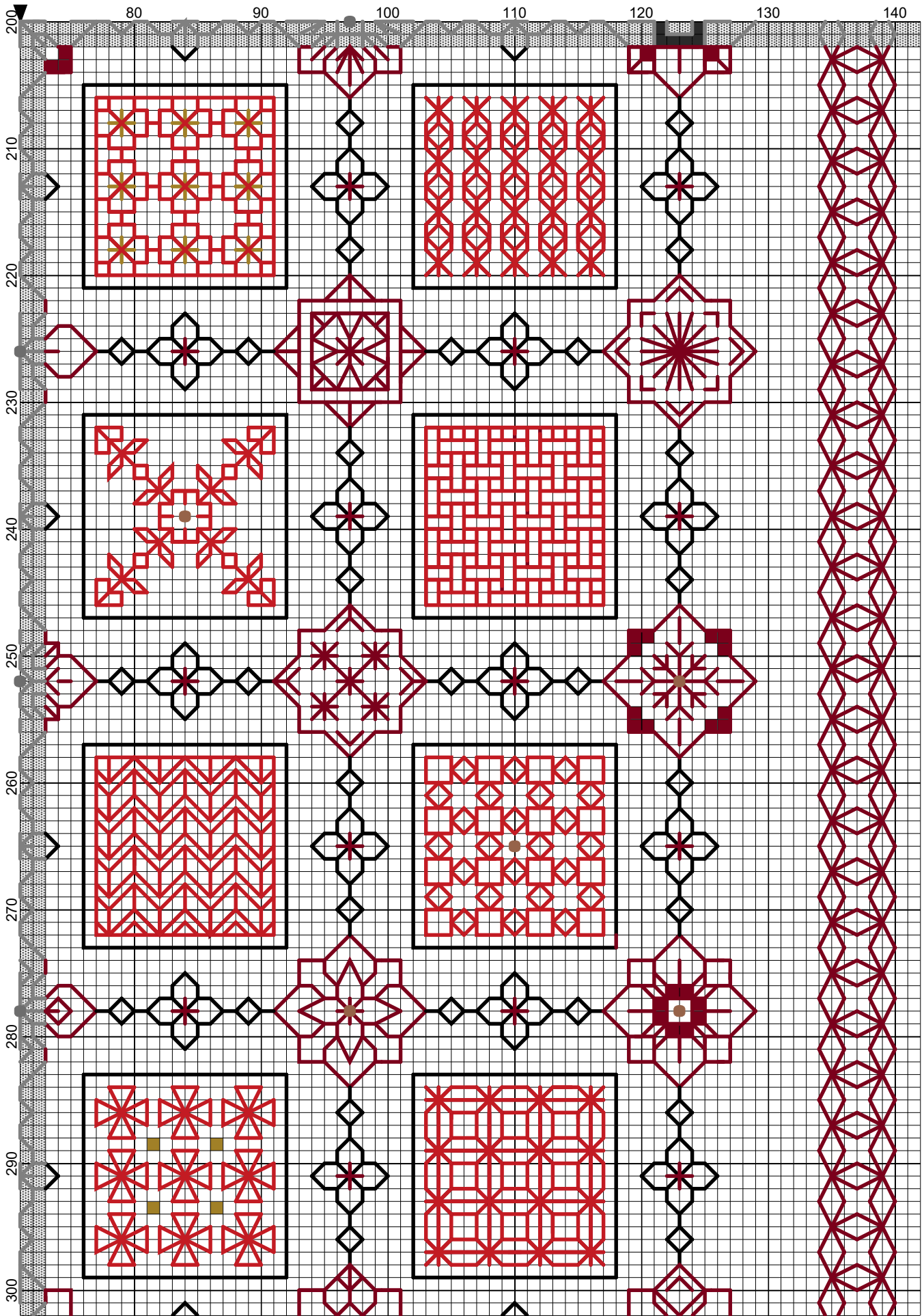
Part 6 Black and gold





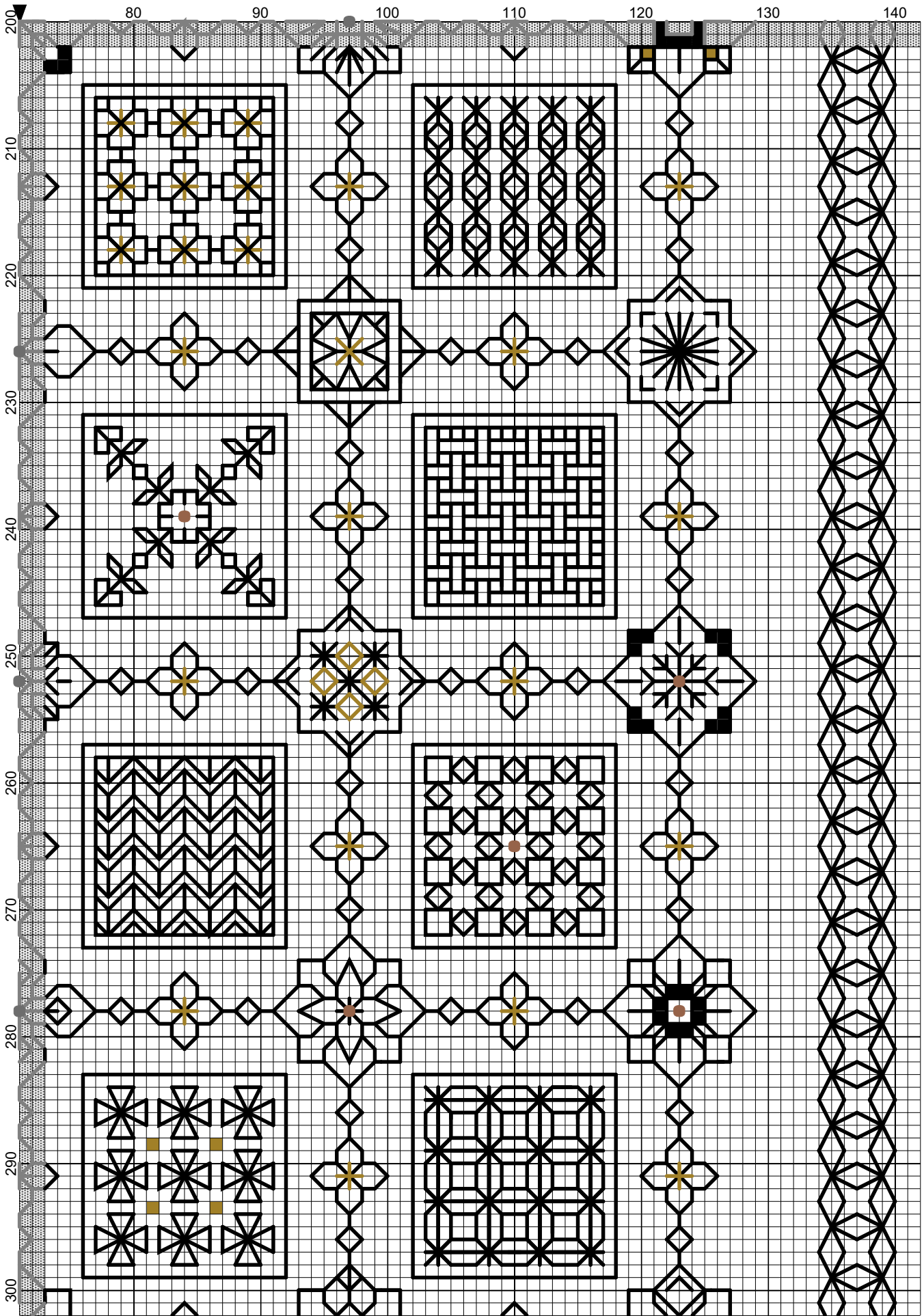
Extracts from Part 6 Rectangle worked in DMC Coloris on 14 count Aida

Tiny Treasures Rectangular Colour Panel



Elizabeth Almond

Tiny Treasures Rectangular Black Panel



Elizabeth Almond